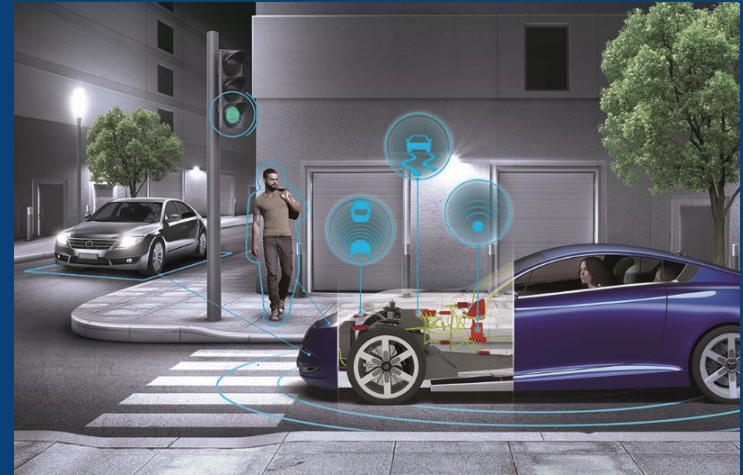


CSD&M 2017

# Model-based Systems Engineering in the age of EXPERIENCE

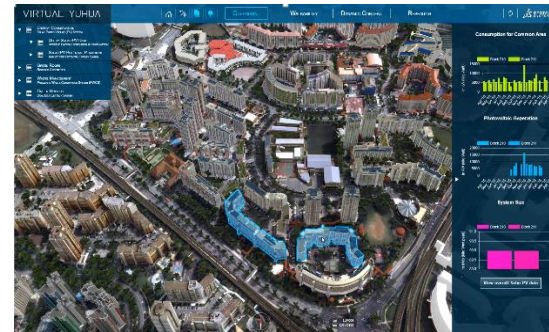


**3DEXPERIENCE®**



Guillaume BELLONCLE  
Pierre MAUREL

# DASSAULT SYSTEMES



## The 3DEXPERIENCE Company

- 200'000 Enterprise Customers
- 25 million Users
- 15'000 passionate Employees

## Partnering with Innovation Leaders in 12 industries



## Investing for the Future

- Cyber Physical Systems
- Smart Cities
- Internet of Things
- Biology and Material Science

# 3DEXPERIENCE Platform

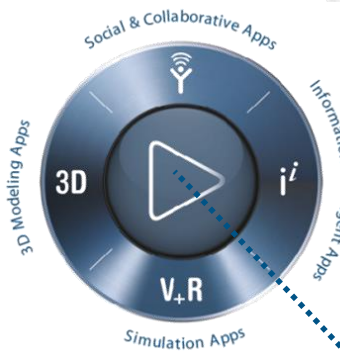
## 3D MODELING Applications



Industrial Design  
Mechanical Design  
Systems Engineering



Material Science  
City Modeling



## VIRTUAL + REAL Simulation Applications



Multi-physics  
& Multi-scale Simulation

Manufacturing Simulation

## SOCIAL & COLLABORATIVE Applications



Social Network  
Ideas sharing & Project Management  
Requirement Management  
Configuration & Change Tracking

## INFORMATION INTELLIGENCE Applications

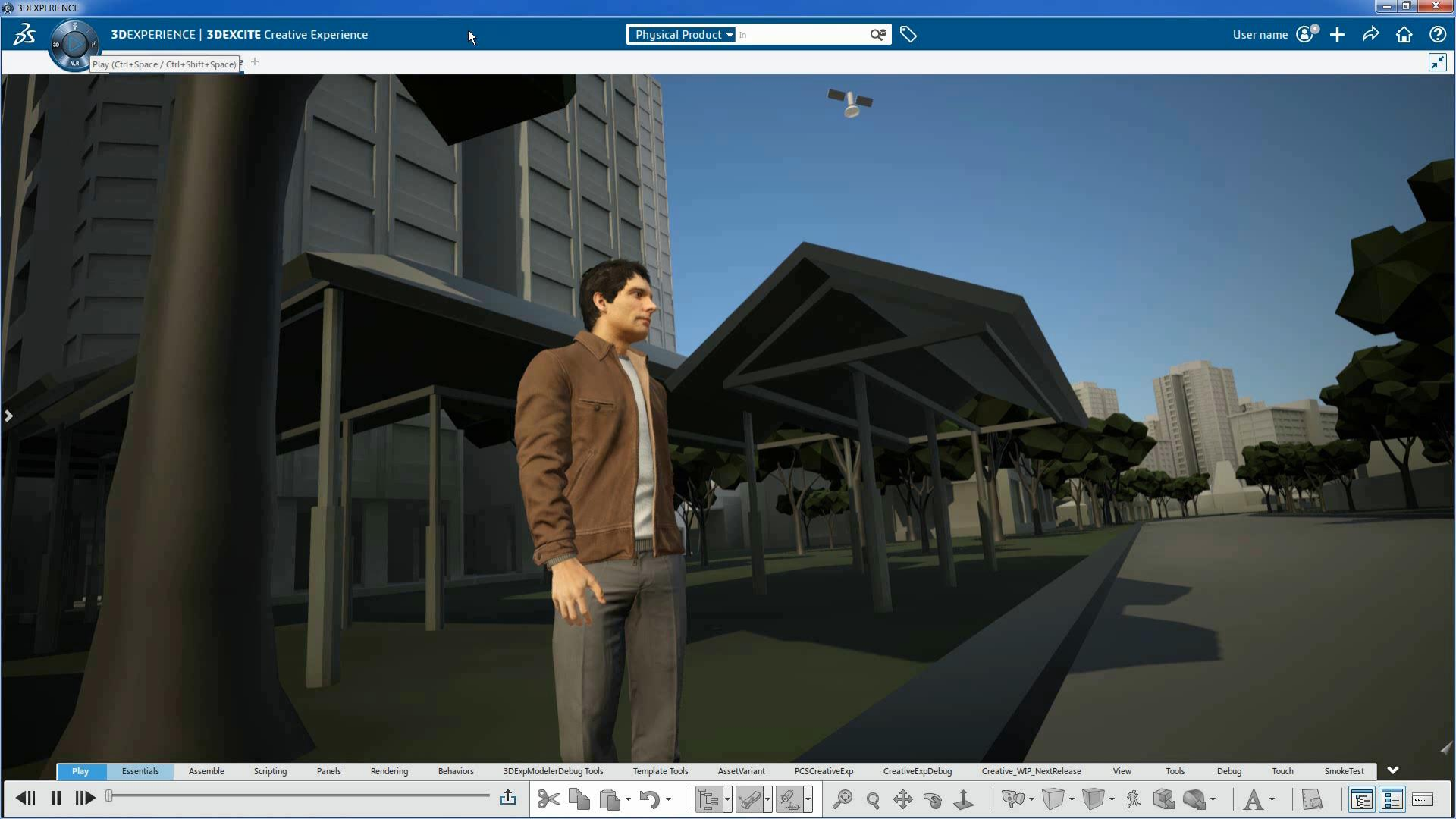


Social Intelligence  
Market Trends Monitoring  
Customer Knowledge  
Big Data Analytics

## PLAY 3DEXPERIENCE



High-End Rendering  
Virtual Sales Configurator  
User Experience Validation





## 3DS.COM © Dassault Systèmes | Confidential Information | 12/14/2017 | ref.: 3DS\_Document\_2015



- **Prevalence** – the proportion of the population with a disease at a particular point in time

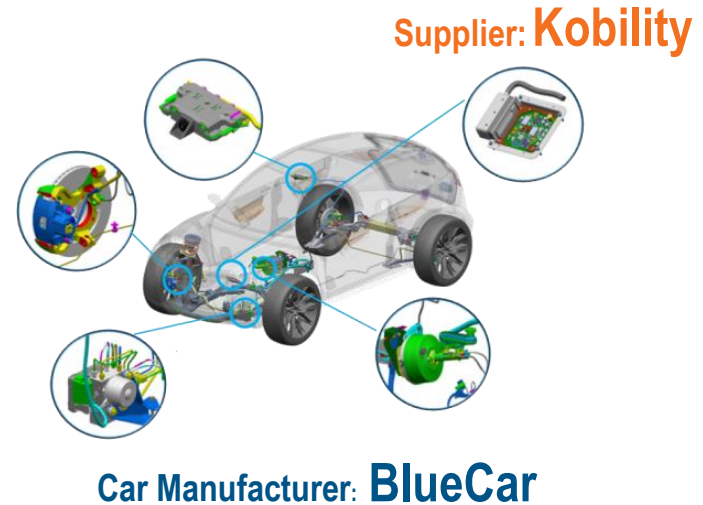
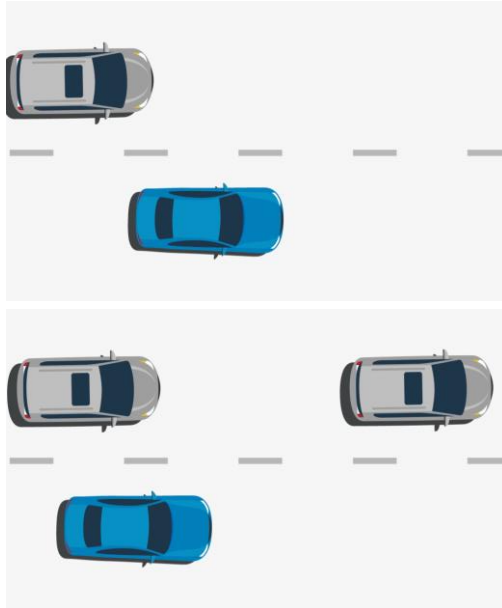


Task Name	Type	W	2016	2017
Autonomous Emergency Braking	Project Start	0		
Concept phase	Phase 1	1		
Product development	Phase 2	14		
Product development	Phase 3	40		
Product development	Phase 4	80		
Production and operations	Phase 5	120		



# Demonstration Storyline

New Advanced Driver Assistance Systems (ADAS) to improve driving automation & safety



# Demonstration Storyline



1

**Innovation  
Ideation**



**Product Manager**



2

**Conceptual  
Architecture**



**Systems Architect**



**Control Algorithm  
Expert**



3

**Trade-offs  
Exploration**



**E/E Architect**



**Safety Expert**



**Simulation Expert**



**Purchaser**



4

**Hardware &  
Software  
Development**



**Software Engineer**



**Project Manager**



**Radar Simulation  
Expert**



5

**Integration &  
Validation**



**Test & Validation  
Engineer**

# Conclusion

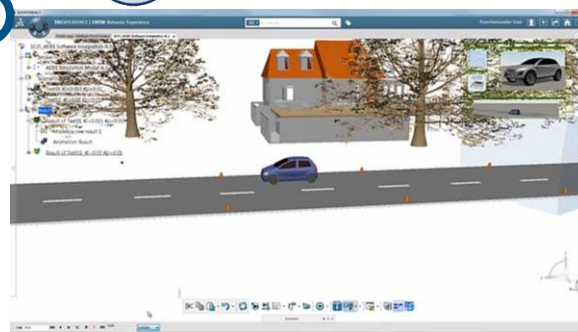
- **Standards** support, **Openness** and **Partnerships**
- **3DS** is continuously investing in **Systems Engineering**



Design



Validate



Experience



**Digital Continuity – Virtual Trust – Agile Collaboration**





# Path to MBSE | Education, Consulting & Coaching

Level 4 – MBSE Methodology Deployment

Level 3 – MBSE Deployment Assessment

Level 2 – MBSE POC

Level 1 – MBSE Method

Level 0 – MBSE Awareness

Assessment of MBSE Business Values

